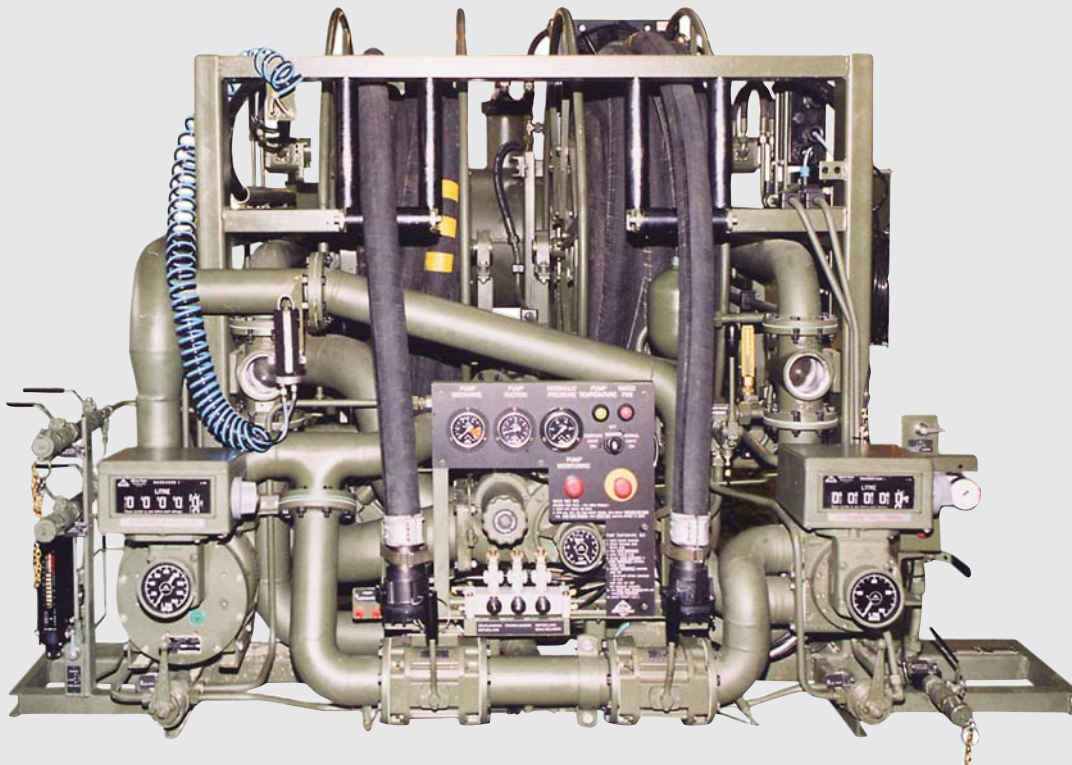


ARU 1350

Aircraft refuelling unit...



...for the Tactical Aircraft Refueller TAR



The Tactical Aircraft Refueller ART with the Aircraft refuelling unit ARU 1350 is used for refuelling of helicopters and vehicles with aviation fuel from own tank.

Further functions are refuelling with the own or an external pump and defuelling from helicopters and vehicles.

The system is mounted on a semitrailer behind the tank.

BASICALLY THE SYSTEM CONSISTS OF:

- PUMP AGGREGATE
- FILTER WATER SEPARATOR
- 2 METER
- 2 HOSE REELS, HOSE FITTINGS / ADAPTER

The pump aggregate comprises a self priming vane pump with hydraulic motor and an adjustable relief valve.

The filter water separator cleans the aviation fuel and removes water from the fuel.

The meters are indicating the product flow, the delivered quantity and the total delivered quantity of the correspondent delivery line.

Each delivery hose reel is equipped with a 30m refuelling hose with Unisex drylock coupling.

Connection to different tanks, cars, vehicles and reservoirs is possible by using hose fitting accessories.

PMA 1350

Pump and measuring system



Technical Data

Refueller media:	non corrosive, free of solids	F34 AVTUR/FSII fuel (UN No 1223, Inst Pet Class 2) F35 AVTUR fuel (UN No 1223, Inst Pet Class 2) F44 AVCAT/FSII fuel (UN No 1223, Inst Pet Class 3) F37 (JP-8+100 fuel) (UN No 1223, Inst Pet Class 2)
Temperature range:	-32°C to +49°C	
Nominal pressure:	10 bar	
Flow rate:	2 x 675 l/min, 1350 l/min (bulk delivery)	
Hydraulic supply:	55 l/min at approx. 170 bar	
Dimensions (LxWxH):	approx. 2840 x 2140 x 1640 mm, approx. 1600 kg	
EX-protection area:	Zone 1, temperature class T3	

Flow chart

