

KPA 400

Autarkic engine driven pump module for refueling of vehicles, helicopter and jets



Alfons Haar



Truck- or Tank-Refueling

2 x 200 l/min with nozzle
KPA 400 B stand alone
mounted on a light truck



Helicopter-Refueling: Underwing or Overwing

KPA 400 C inside tank container, fully operationable onboard of truck
1 x 400 l/min with filter water separator, HEPCV interchangeable with nozzle



Jet-Refueling: Underwing

KPA 400 C with own 5'-container frame hooked to tank container
1 x 400 l/min with filter water separator and HEPCV
Off-loaded from truck fully operationable

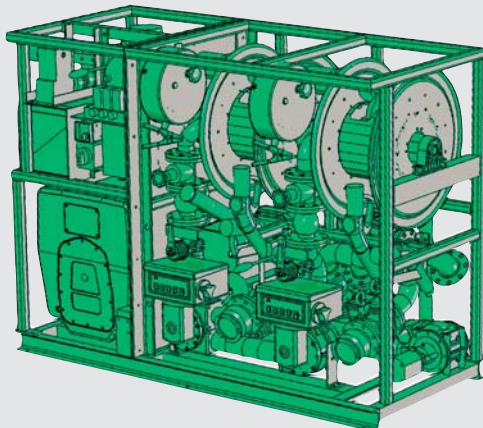
KPA 400

Autarkic engine driven pump module for refueling of vehicles, helicopter and jets



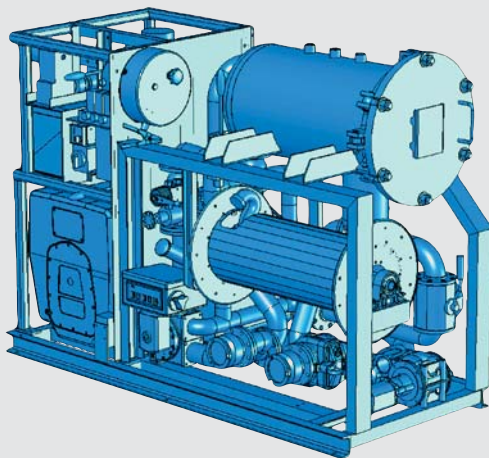
Alfons Haar

Interior view of the KPA 400:



KPA 400 B for Diesel, Fuel, Jet-Fuel Refueling of land vehicles or jerry cans

- 2x 200 l/min metered, 2x 20 m hose with nozzle
- Bulk delivery 400 l/min
- Self loading
- Fuel transfer



KPA 400 C for Jet-Fuel Refueling of aircrafts with filter water separator Acc. API 1581 5th Edition

- 400 l/min metered
 - 30 m hose with HEPCV or nozzle
 - Bulk delivery over 400 l/min
 - Self loading
 - Deadman, bonding-reel
- Option: Defueling, Circulation



KPA 400 B and C

W x D x H approx.:

1800 mm x 800 mm x 1400 mm

- Diesel engine with electronic and hand start
 - Air-compressor, generator
- Option: Motor driven with Kerosene